

Welcome To

SINPRO

EV

Motor / Motor Driver / Charger / DC-DC

SPS for ITE / Medical / Industrial

ODM / OEM

01

Global Locations

Company Profile

02

Products Series

EV Products & Application

03

New Products (2021~2022)

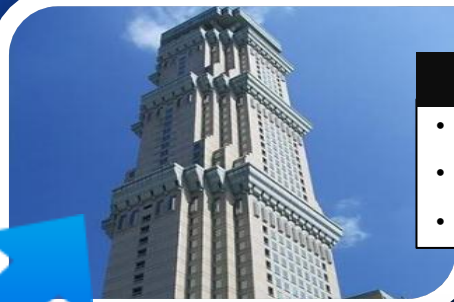
Two-Year Plan





SHENZHEN FACTORY (China)

- Area: 7,500 m²
- SPS, Transformer, Cable
- Employees: 300



KAOSIUNG COMPANY (Taiwan)

- Operation Center
- Area: 1,696 m²
- Employees: 50



PINGTUNG FACTORY (Taiwan)

- Area: 10,000 m²
- Power Supply manufacturing
- Employees: 250

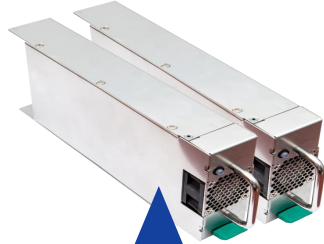


EV

Products & Application



Battery Swap System



Charger for
Battery Station



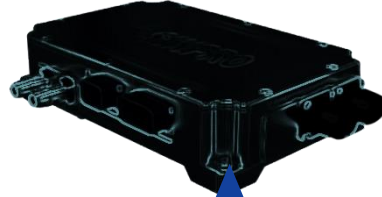
Battery Charger



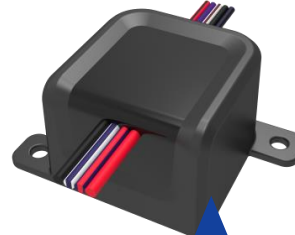
DC to DC



Motor &
Motor Driver



On Board Charger



Wiper Motor Controller



Battery
Discharger

B to B

Battery Swap System

SINPRO



Highlight

- Modular Design
- Customization
- Cloud operation interface

B2B & Charging Factory

EV

Battery charging system - Digital control



Power : 300W~700W
Spec : 5A 、 12A

Highlight

- N + 1 redundancy possible.
Installation, repair is convenient,
Even if one unit breaks down,
the other can be used.
- Communication Interface:
CAN BUS (custom available)
- Automatically identify the
charging mode and
increase battery life according
the battery characteristics.

Application

- Battery Swap System
- Quick Charging System

Charger for Battery System

EV

EV/E-Bike Charger and fast charger



Power : 150W~900W
Spec : 3A , 5A , 12A , 15A

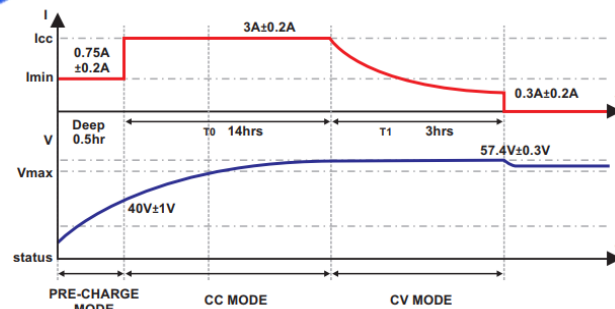
BPU170-112
Charge
characteristic
Chart→

Highlight

- Smart Charging-digital
- Charger for lithium ion battery
- High Efficiency: 94%
- High voltage and current accuracy

Application

- Commercial Fast charging
- Household charging
- EV/E-bike charger



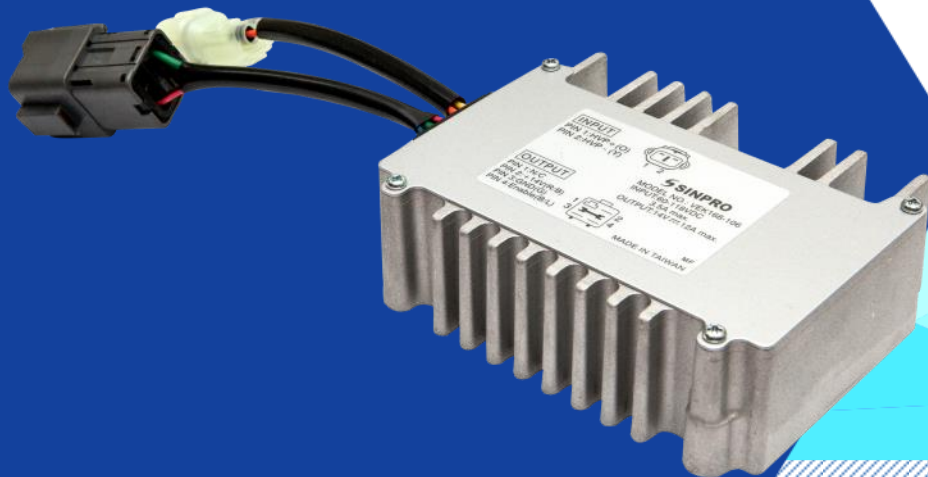
PRE-CHARGE CURRENT : $0.75A \pm 0.2A$
PRE-CHARGE VOLTAGE : $32-40V \pm 1V$
FULL CHARGE CURRENT : $3A \pm 0.2A$
FULL CHARGE CUT-OFF CURRENT : $0.3A \pm 0.2A$
FULL CHARGE VOLTAGE : $57.4V \pm 0.3V$

Battery Charger

SINPRO

EV

EV/E-Bike DC/DC converter



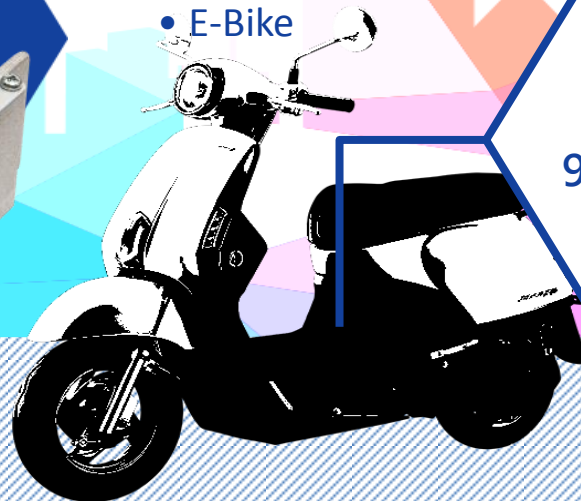
For 96V/48V/36V
input battery System

Highlight

- Customization available
- C.C.+C.V. mode
- Varies protection
- IP67 Grade

Application

- Two / Three wheelers
- E-Bike



DC/DC
96V to 12V

DC-DC

EV

7.6KW Motor & Motor driver

GIK7600-103 //

Motor Type :

Interior Permanent Magnet Synchronous Motor

Cooling Method: water cooling system

Max output power: 7.6 KW @ 1000 RPM

Max torque: 78 N*m @ 0 - 830 RPM

Maximum efficiency: 90% @ 1250 RPM

Minimum efficiency: 42% @ 100 RPM



RFK7600-103

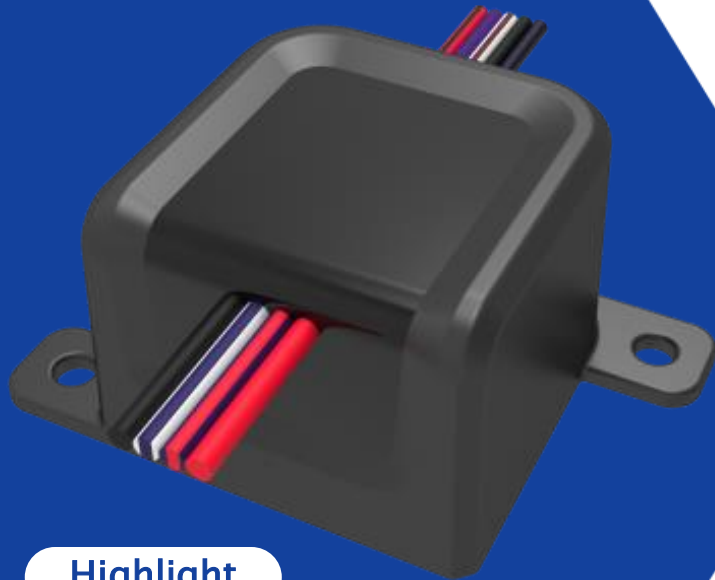
-MAX-

- Rated input voltage: 55Vac , 3-PHASE
- Input current: 115A
- Torque: 78 N*m @ 0 - 830 RPM
- Output power: 7.6 KW @ 1000 RPM
- Revolution(s) Per Minute: 3000 RPM

DFK7600-114

- Rated input voltage: 96 Vdc
- Rated output voltage: 55Vac , 3-PHASE
- Rated power: 7600W
- Rated current: 115A

Wiper Motor Controller



Highlight

- Vin: 10~16Vdc
- Vout: 13.5V @ 9A
- Maximum output power: 121W



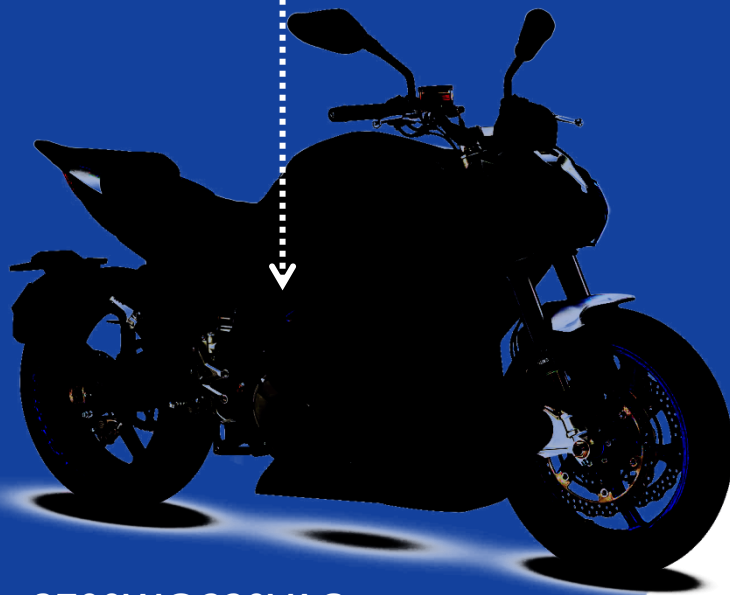
Protection

Built-in E-FUSE, OCP, OVP, OTP.
Input reverse polarity protection
Short circuit protection.

Wiper speed controller

EV

3.7 KW On-board charger



3700W@220VAC
1600W@110VAC

Highlight

- High efficiency up to 93%
- Operating temperature: -35 to +65°C
- CAN bus Interface
- Water-cooled

Application

- Electric motorcycle
- Powered pallet trucks
- Golf carts

On-Board Charger

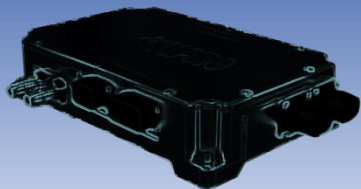
EV

Battery Discharger - Customization

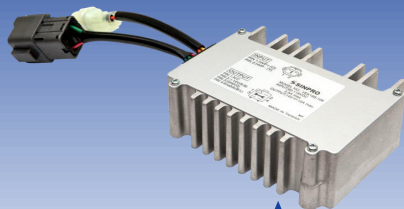
- Power : 625W
- 5A discharge



New Products (2021~2022)



7.6KW
On Board Charger



350~500W
DC / DC



17.6KW
Motor Driver



1.5KW
Battery Charger

Application

- Electric Motorcycle
- Forklift Truck
- Golf Cart
- Floor Cleaning Machine
- Automation Guided Vehicle
- Aerial Work Platform



Thank you